

HotSpot Gateway Series

Captive Portal | CMS | AAA | Monetization

Overview

mbox HotSpot Gateway (HSG) series are the ideal gateway solutions to empower guest hotspot access, and offer differentiated experiences for hotel guests, VIP members, public users and visitors, while supporting numerous authentication options with web CMS for easy captive portal customisations.

HSG packs all essential features in a powerful appliance, simplifies deployment and optimises costs, while enjoying maximum performance and reducing point of failures.

HSG integrates with mfusion advertising platform where ads contents can be created through intuitive web interface, and streams marketing campaigns seamlessly to end user devices, transforming Wi-Fi infrastructure from a cost center into a revenue platform.



What HSG does?

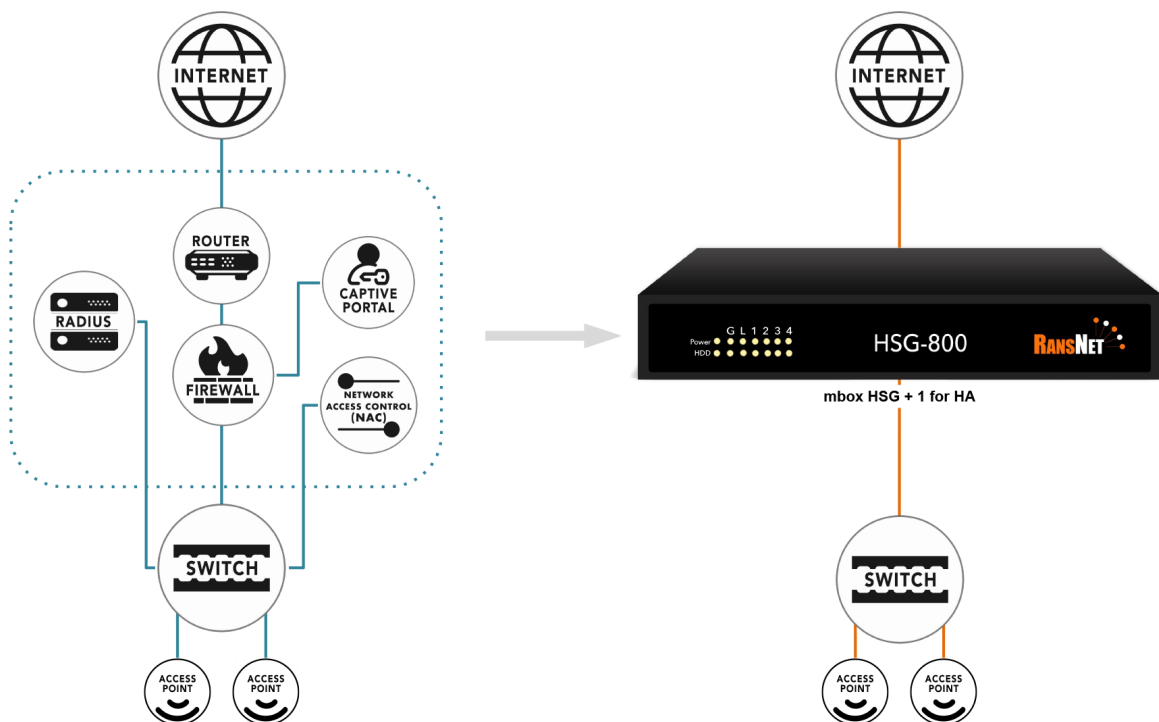
- Authenticates user access with captive portals
- Customises portal page with web-based CMS
- Offers profile-based user experience
- Manages millions of local accounts
- Integrates with many external databases
- Logs user access for data analytics
- Manages wireless AP with built-in AP controller
- Monetises Wi-Fi infra through advertising engines

What's so special about HSG?

- Comprehensive hotspot features in a powerful box
- Monetization gateway to maximise Wi-Fi investment
- Easy to deploy portals with templates and CMS
- Easy to operate with cloud mfusion integration

Who need HSG?

Hotels/Malls/Retail chains/Schools/Hospitals/F&Bs



Specifications



	HSG-100L	HSG-100	HSG-200	HSG-400	HSG-800	HSG-2000	HSG-5000	HSG-15000	HSG-25000
Performance									
Total HotSpot Instances (VLANs)	100	200	200	200	200	500	500	2000	2000
- Max Throughput per HotSpot Instance	100Mbps	200Mbps	200Mbps	200Mbps	200Mbps	1Gbps	1Gbps	1Gbps	1Gbps
- Max Concurrent Devices per HotSpot Instance	100	200	200	200	200	2000	2000	2000	2000
Total Throughput (w/ hotspot)	250Mbps	500Mbps	500Mbps	500Mbps	500Mbps	2Gbps	2Gbps	5Gbps	5Gbps
Total Current Devices (w/ hotspot)	100	100	200	400	800	2000	5000	15000	25000
Total Throughput (w/o hotspot)	800Mbps	1.5Gbps	1.5Gbps	1.5Gbps	1.5Gbps	3Gbps	3Gbps	5Gbps	5Gbps
Total Concurrent Devices (w/o hotspot)	1000	5000	5000	5000	5000	10000	10000	50000	50000
Processor	Multi-core	Multi-core	Multi-core	Multi-core	Multi-core	Multi-core	Multi-core	Dual CPU	Dual CPU
Memory (RAM)	2GB	4GB	4GB	4GB	4GB	16GB	32GB	32GB	64GB
Gigabit Interface	4 x GE	4 x GE	4 x GE	4 x GE	4 x GE	8 x GE	8 x GE	8 x GE	8 x GE
10G Interface (fiber or copper)	-	-	-	-	-	Optional	Optional	Optional	Optional
Network and Security									
Stateful Firewall & DHCP Server	✓	✓	✓	✓	✓	✓	✓	✓	✓
Static, Dynamic Routing (OSPF/BGP)	✓	✓	✓	✓	✓	✓	✓	✓	✓
NAT, PAT, SNAT, DNAT, Port forwarding	✓	✓	✓	✓	✓	✓	✓	✓	✓
IPSec, GRE, SSLVPN, L2TPv3	✓	✓	✓	✓	✓	✓	✓	✓	✓
IPv4 and IPv6 Capable	✓	✓	✓	✓	✓	✓	✓	✓	✓
VLAN, Trunking (802.1q), Bonding	✓	✓	✓	✓	✓	✓	✓	✓	✓
HA w/ Stateful Failover	✓	✓	✓	✓	✓	✓	✓	✓	✓
Captive Portal Features									
Login page templates and CMS	✓	✓	✓	✓	✓	✓	✓	✓	✓
Bandwidth Control (Static/Dynamic)	✓	✓	✓	✓	✓	✓	✓	✓	✓
Time/Data/Session/Device Control	✓	✓	✓	✓	✓	✓	✓	✓	✓
Whitelist by URL/Domain/IP/MAC	✓	✓	✓	✓	✓	✓	✓	✓	✓
Local Authentication (RADIUS)	✓	✓	✓	✓	✓	✓	✓	✓	✓
SMS & Email Signup, Social Media, POS, CRM, LDAP, RADIUS proxy	✓	✓	✓	✓	✓	✓	✓	✓	✓
PMS/API/payment gateway integration	✓	✓	✓	✓	✓	✓	✓	✓	✓
Landing page and In-session ads	✓	✓	✓	✓	✓	✓	✓	✓	✓
User log and data Analytics	✓	✓	✓	✓	✓	✓	✓	✓	✓
Management & Monitoring									
Wireless AP management (MACC)	-	-	-	-	-	✓	✓	✓	✓
mfusion monitoring & management	✓	✓	✓	✓	✓	✓	✓	✓	✓
Online Firmware Patching and Upgrade	✓	✓	✓	✓	✓	✓	✓	✓	✓
Physical / Environmental Specs									
Dimensions (mm) (WxHxD)	230 x 30 x 151.5	231.9 x 44 x 152	231.9 x 44 x 152	231.9 x 44 x 152	231.9 x 44 x 152	430 x 44 x 450	430 x 44 x 450	562 x 88 x 430	562 x 88 x 430
Weight	1kg	2.5kg	2.5kg	2.5kg	2.5kg	6kg	6kg	13kg	13kg
Power Consumption	< 18W	< 18W	< 18W	< 18W	< 18W	< 230W	< 230W	< 420W	< 420W
Redundant Power Supply	-	-	-	-	-	Optional	Optional	Included	Included
Design Form Factor	Desktop	Desktop	Desktop	Desktop	Desktop	1U rack	1U rack	2U rack	2U rack
Operating Temperature	0°C to 40°C	0°C to 40°C	0°C to 40°C	0°C to 40°C	0°C to 40°C	0°C to 40°C	0°C to 40°C	0°C to 40°C	0°C to 40°C
Certifications FCC/CE/ROHS									