

G4L

Visible Light Facial Recognition and Multi-Biometric Time & Attendance and Access Control Terminal

Compatible with
ZKBioSecurity

Compatible with
BioTime 8.0



Enhanced Visible Light Facial Recognition is the latest technology of ZKTeco, aimed to overcome shortcomings of previous facial recognition and achieve an all-rounded upgrade on whatever performance and reliability. G4L is a multi-biometric identification terminal, notably offers enhanced Visible Light facial recognition and SilkID fingerprint authentication technology.

Compared with other near-infrared facial identification devices, G4L, equipped with advanced Visible Light Facial Recognition technology, enables quicker automatic face detection and facial recognition when a target enters its detection distance from 0.5m to 2.5m.

With new deep learning algorithms applied, the anti-spoofing technology performance has been dramatically heightened and can prevent different types of photos and video attacks.

Also, with the cutting-edge 3D Neuron Fingerprint Algorithm, G4L precisely authenticates dry, wet, or rough fingerprints efficiently and accurately. Apart from Visible Light facial recognition and SilkID fingerprint authentication, G4L also supports identification with RFID cards and passwords.

Features



Revolutionary SilkID Fingerprint Sensor



Proactive Facial Recognition



Wide Pose Angle Acceptance



Visible Light Facial Recognition



New Height of Anti-Spoofing



Touchless for Better Hygiene



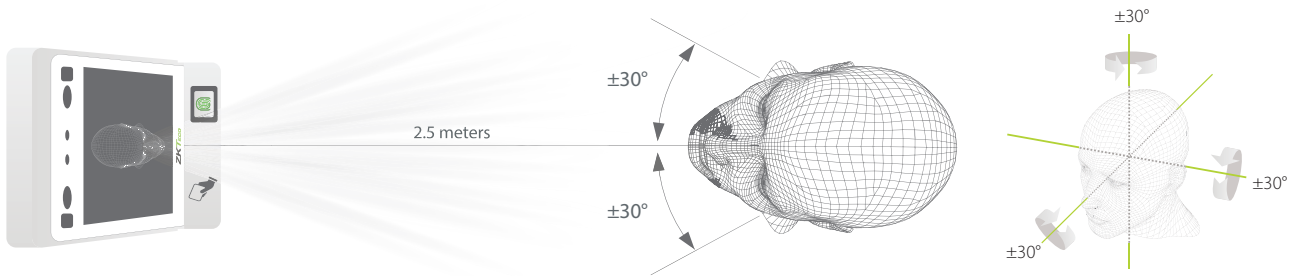
Multiple Verification Methods



Speedy Recognition

Long Recognition Distance of 2.5m Plus Extra Wide Angle

The recognition distance has been greatly extended to 2.5 meters, which significantly improves the maximum traffic rate. While most of the algorithms only support 15-degree angle facial recognition, ZKBioFace supports 30-degree angle facial recognition.



Specifications Ⓞ: GL Exclusive Feature)

Capacity

User	10,000
Ⓞ Face	10,000
Ⓞ Fingerprint	10,000
Card	10,000
Transaction	1,000,000

Communication

TCP/IP
Wi-Fi
Wiegand Input
Wiegand Output
RS485

Access Control Interface

Lock Relay Output
Exit Button
Alarm Output
Door Sensor

Hardware

Ⓞ 900MHz Dual Core CPU
Memory 512MB RAM/ 8G Flash
Ⓞ 2MP WDR Low Light Camera
Ⓞ 7-inch Touch Screen, 1280*720 pixels
Linux Operating System
Adjustable Monitor Brightness

Standard Functions

ID Card / Work Code / ADMS
DST / Bell Schedule
Attendance Status Auto-Switch
Record Query / Photo ID

Optional Functions

Ⓞ 13.56 MHz IC / LEGIC Card
Ⓞ PoE

Special Functions

Ⓞ Visible Light Facial Recognition
Ⓞ Alive Face Detection
Multiple Biometric Verification Modes

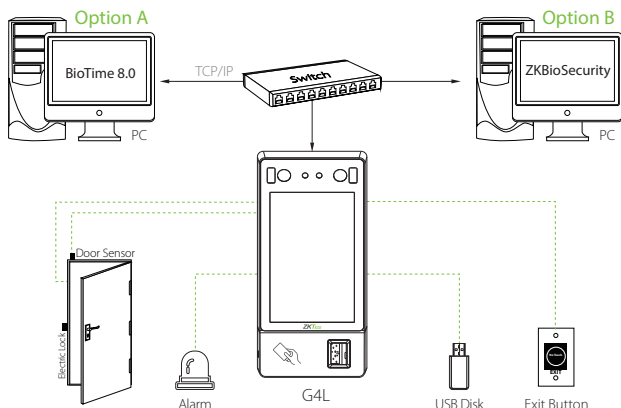
Compatibility

BioTime 8.0
ZKBioSecurity (Time & Attendance)

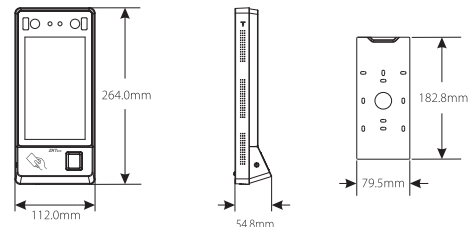
Additional Info

Algorithms	ZKFace V5.8 ZKFinger V10.0
Working Temperature	0°C - 50°C (32°F - 122°F)
Working Humidity	<90%
Dimensions (W*H*D)	264*112*54.8 mm
Facial Recognition Speed	≤0.3 sec
Ⓞ Facial Recognition Distance	0.5m ~ 2.5m
Power	DC12V 3A

Configuration



Dimensions (mm)



ZKTECO CO., LTD.

www.zkteco.com

E-mail: sales@zkteco.com



Copyright©2020 ZKTECO CO., LTD. All rights reserved.

V3.0 2020.06.08