

Smart WIFI Wall Socket



Features:

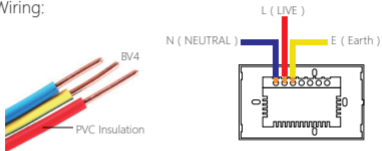
1. High quality tempered glass panel design, never fade.
2. With blue LED indicator, very distinguished.
3. Easy to install, replace the old switch directly.
4. The products have safety gate.
5. Support Amazon Alexa and Google Assistant etc.

Installation:

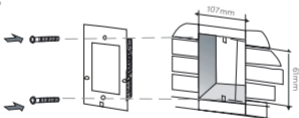
1. Open the front cover by a small flat screwdriver



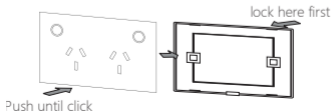
2. Wiring:



3. Fix screws



4. Cover the panel and connect the power.



1. Download APP



2 Contact APP

Press any "○" button of switch for 5 seconds.
The "○" button's backlight flicks, Then release finger



3 Add Wall Socket

Exit learning mode .

Learning mode will exit if you have no operation after 3min

Specification:

Smart Remote Wall Socket:

Dimension: 120*72*42MM

Voltage: 110-240V AC/50~60Hz

Operating Current:10A

Warning

- 1.please installed by certified electrician.
- 2.Please turn off general power before installation .
- 3.Please do not modify any parts of our product.We are not responsible for unauthorized alteration products.